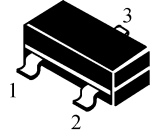


# KEL<sup>®</sup>

A6801

SOT-23

- 1. BASE
- 2. EMITTER
- 3. COLLECTOR



## ■FEATURES 特點

Suitable for Driver Stage of Small Motor

## ■MAXIMUM RATINGS 最大定額值(T<sub>a</sub>=25°C)

CHARACTERISTIC 特性參數	Symbol 符號	Rating 額定值	Unit 單位
Collector-Base Voltage 集電極-基極電壓	V <sub>CBO</sub>	-25	V
Collector-Emitter Voltage 集電極-發射極電壓	V <sub>CEO</sub>	-18	V
Emitter-Base Voltage 發射極-基極電壓	V <sub>EBO</sub>	-5.0	V
Collector Current-Pulse 集電極電流-脉冲	I <sub>C</sub>	-1800	mA
Base Current 基極電流	I <sub>B</sub>	-180	mA
Collector Power Dissipation 集電極耗散功率	P <sub>C</sub>	300	mW
Junction Temperature 結溫	T <sub>j</sub>	150	°C
Storage Temperature Range 儲存溫度	T <sub>stg</sub>	-55~150	°C

## ■DEVICE MARKING 打標

A6801=6801

KEL A6801



A6801

■ELECTRICAL CHARACTERISTICS 電特性

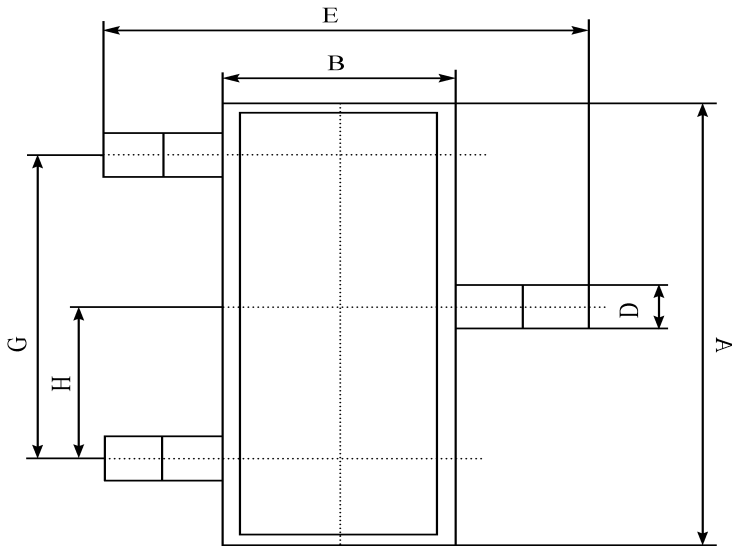
( $T_A=25^{\circ}\text{C}$  unless otherwise noted 如無特殊說明，溫度為  $25^{\circ}\text{C}$  )

Characteristic 特性參數	Symbol 符號	Test Condition 測試條件	Min 最小值	Typ 典型值	Max 最大值	Unit 單位
Collector Cutoff Current 集電極截止電流	$I_{CBO}$	$V_{CB}=-15\text{V}, I_E=0$	—	—	-150	nA
Emitter Cutoff Current 發射極截止電流	$I_{EBO}$	$V_{EB}=-4\text{V}, I_C=0$	—	—	-150	nA
Collector-Base Breakdown Voltage 集電極-極擊穿電壓	$V_{(BR)CBO}$	$I_C=-100\mu\text{A}$	-25	—	—	V
Collector-Emitter Breakdown Voltage 集電極-射極擊穿電壓	$V_{(BR)CEO}$	$I_C=-1\text{mA}$	-18	—	—	V
Emitter-Base Breakdown Voltage 發射極-基極擊穿電壓	$V_{(BR)EBO}$	$I_E=-100\mu\text{A}$	-5	—	—	V
DC Current Gain 直流電流增益	$H_{FE(1)}$	$V_{CE}=-1\text{V}, I_C=-100\text{mA}$	85	—	400	—
	$H_{FE(2)}$	$V_{CE}=-1\text{V}, I_C=-2000\text{mA}$	50	—	—	
Collector-Emitter Saturation Voltage 集電極-發射極飽和壓降	$V_{CE(sat1)}$	$I_C=-1000\text{mA}, I_B=-100\text{mA}$	—	—	-0.3	V
	$V_{CE(sat2)}$	$I_C=-2000\text{mA}, I_B=-200\text{mA}$	—	—	-0.5	V

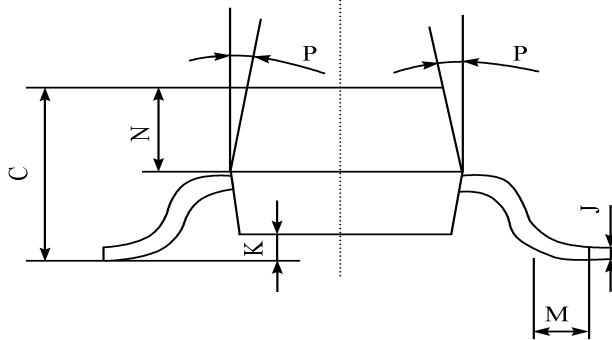


A6801

■DIMENSION 外形封裝尺寸



序號	數值及公差
A	$2.90 \pm 0.10$
B	$1.30 \pm 0.10$
C	$1.00 \pm 0.10$
D	$0.40 \pm 0.10$
E	$2.40 \pm 0.20$
G	$1.90 \pm 0.10$
H	$0.95 \pm 0.05$
J	$0.13 \pm 0.05$
K	$0.00 - 0.10$
M	$\geq 0.2$
N	$0.60 \pm 0.10$
P	$7 \pm 2^\circ$



This datasheet presents technical data of Tak Cheong's Silicon Rectifier Diodes. Complete specifications for the individual devices are provided in the form of datasheets. A comprehensive Selector Guide is included to simplify the task of choosing the best set of components required for a specific application. For additional information, please visit our website <http://www.takcheong.com>.

Although information in this datasheet has been carefully checked, no responsibility for the inaccuracies can be assumed by Tak Cheong. Please consult your nearest Tak Cheong's sales office for further assistance.

Tak Cheong reserves the right to make changes without further notice to any products herein to further improve reliability, function or design, cost and productivity.

**KEL** is registered trademarks of Tak Cheong Electronics (Holdings) Co., Ltd.